

 **DUNLOP**  
TAKE THE ROAD

# SP SPORT MAXX 060+



**Available @TheWheel**

**THE FINEST IN  
JAPANESE ULTRA-HIGH  
PERFORMANCE**

EU LABEL WET GRIP "A" GRADE

40% IMPROVED MILEAGE\*

NANO BLACK LETTERING

\* compared to its predecessor: Dunlop SP SPORT MAXX 050+

**Toll Free: 08001 10014**

  @atthewheelz  
[www.atthewheel.co.tz](http://www.atthewheel.co.tz)



# SP SPORT MAXX 060+

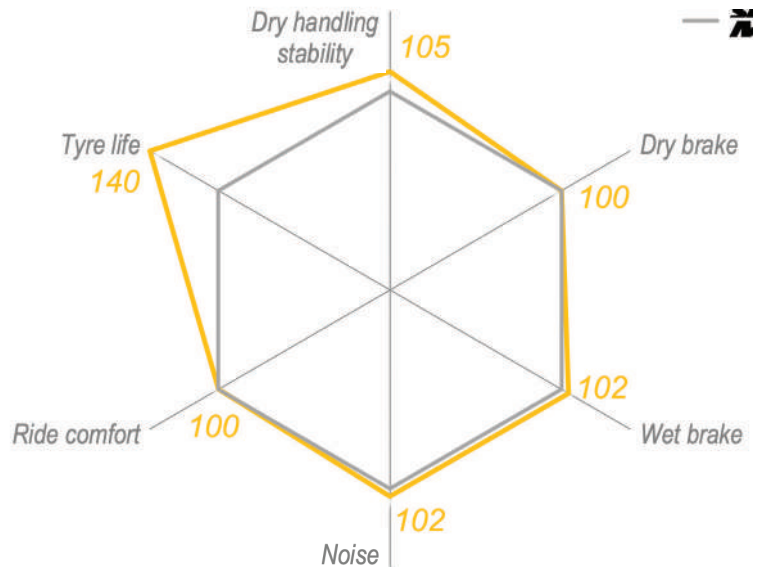
## PERFORMANCE COMPARISON

**SP SPORT MAXX 060+**

**SP SPORT MAXX 050+**

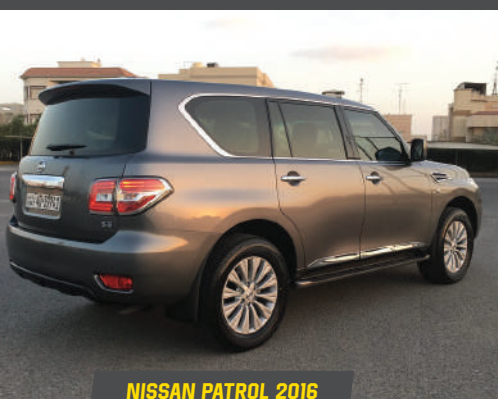
**TEST CONDITIONS**

Site: SRI Okayama Tyre Proving Ground, HQ Testing Lab, Japan  
 Tyre Size: 245/45R18 100Y XL  
 Tyre Pressure (kPa): 220  
 Test Car: Mercedes Benz E200  
 Speed: 60 - 100km/h  
 Test Item: Brake Distance, Handling, Hydroplane, Noise, RRC, Wear



## THE SP SPORT MAXX RANGE

ORIGINAL EQUIPMENT ON JAPAN'S TOP ULTRA-HIGH PERFORMANCE CARS



NISSAN PATROL 2016



BMW 3 SERIES



LAND CRUISER 200 SERIES

## THE PERFORMANCE TYRE RANGE

ULTRA-HIGH PERFORMANCE

HIGH PERFORMANCE

STANDARD PERFORMANCE



SP SPORT MAXX 060+



SP SPORT FM800



SP SPORT 560

**MIKOCHENI**

+255 652 919 455  
 mikocheni@thewheel.co.tz

**MAGOMENI**

+255 679 287 701  
 magomeni@thewheel.co.tz

**KAWE**

+255 652 919 413  
 kawe@thewheel.co.tz

**OYSTERBAY**

+255 652 919 431  
 oysterbay@thewheel.co.tz

**KAMATA**

+255 710 826 423  
 kamata@thewheel.co.tz

www.atthewheel.co.tz



Toll Free: 08001 10014

@atthewheeltz  
 www.atthewheel.co.tz

